

data sheet – CTK (cabinet turntable kit) Range

CTK (Cabinet Turntable Kit) Range

A rotating display is an ideal way to catch the eye and draw the attention of passers-by. A secure display cabinet incorporating attractive shelving and smooth, controlled movement by Movetech UK will greatly enhance jewellery, fine porcelain and fragrances as they are presented to the public. In fact they are popular the world over with shop fitters, designers, department stores, supermarkets and independents.

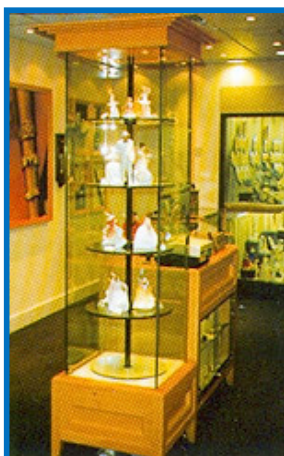
Movetech UK powered rotation is an ideal display enhancement tool, and the CTK range, unlike standard display turntable drives the shelf systems and, has been specially developed to make it easy to remove for maintenance or repair while leaving the display intact.



Used with your existing shelf system, or with one we supply, this special turntable drive can be discreetly mounted above or below the cabinet. The motor engages with the rotating shelf in such a way that, in the unlikely event you experience a problem with the turntable drive, you can remove it without specialist tools or disturbing the display.



The CTK range, therefore, offers all the benefits of movement - to attract attention to high value goods and make efficient use of display space – especially those corner areas.

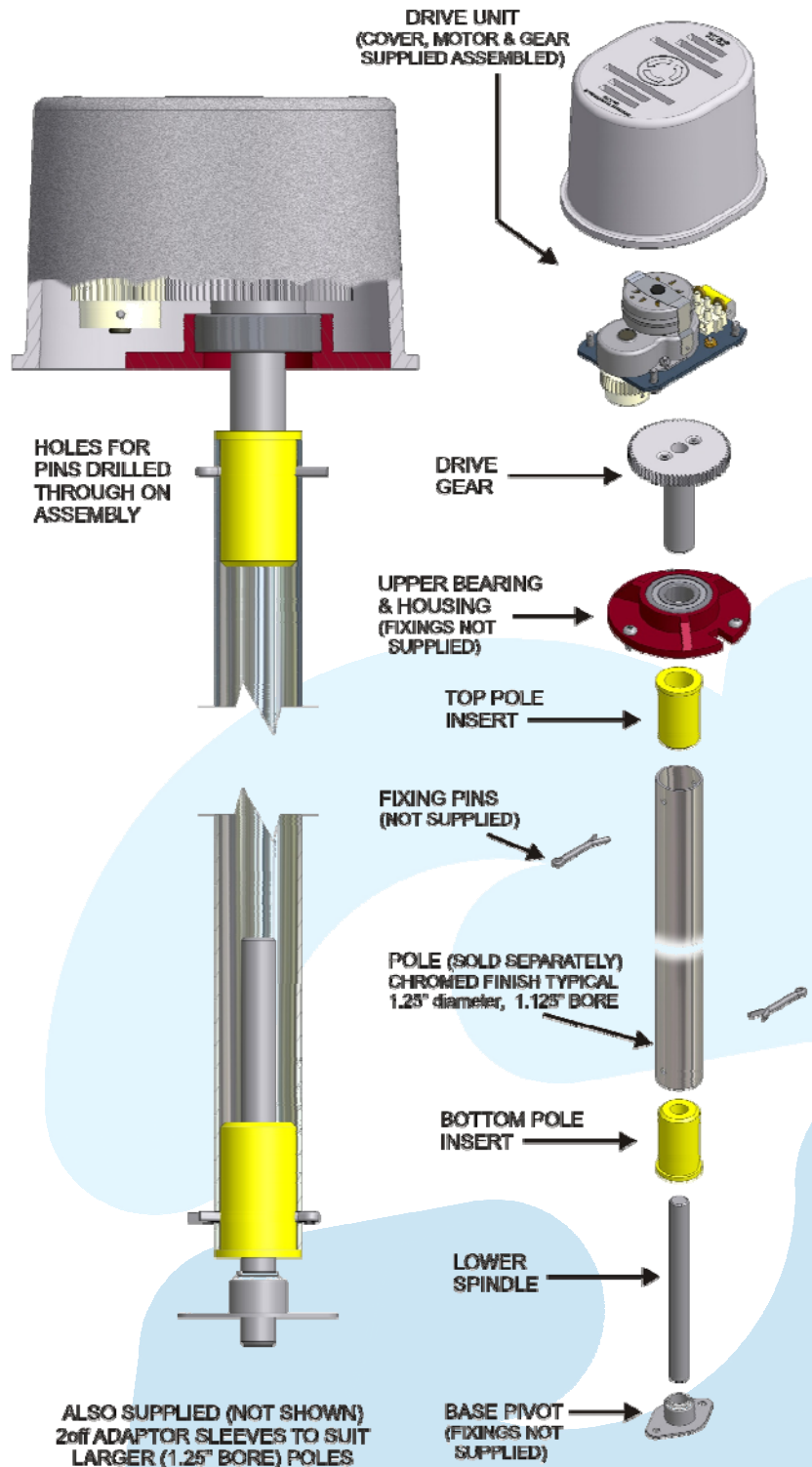
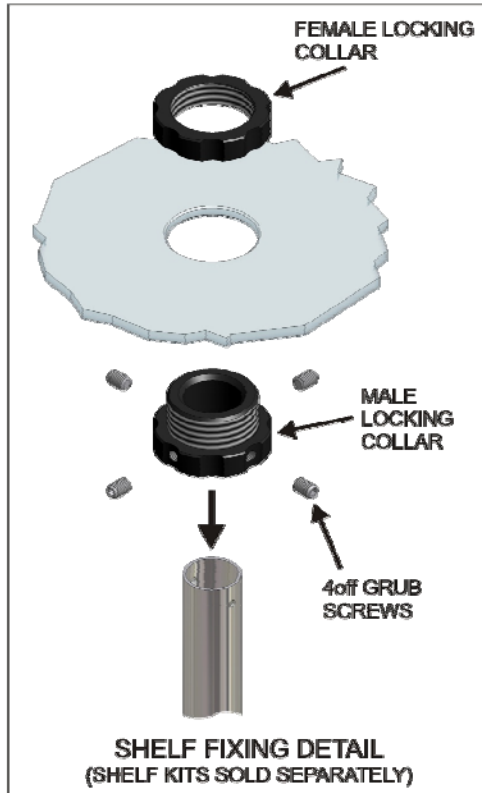


Movetech UK's CTK range includes both top mounted and bottom mounted units, and each kit comes complete with drive assembly, bearing and pivot. Glass shelves, mounting collars and poles can also be supplied.

Installation is straightforward, and with the design of the Movetech UK drive allowing for easy removal without disturbing the display, the result is a smooth, quietly moving display that will attract customers and encourage them to buy.



Max. Recommended Load: 90Kg
Speed: 1rpm
Power: 240v single phase



ALSO SUPPLIED (NOT SHOWN)
2 off ADAPTOR SLEEVES TO SUIT LARGER (1.25\"/>

LOWER SPINDLE

BASE PIVOT (FIXINGS NOT SUPPLIED)

